

20,500 SF INDUSTRIAL SPACE FOR LEASE

134 Morgan Avenue, East Williamsburg, Brooklyn

MORGAN
PARK

TERRENO

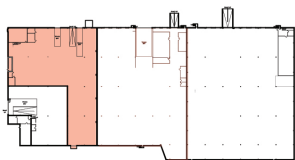
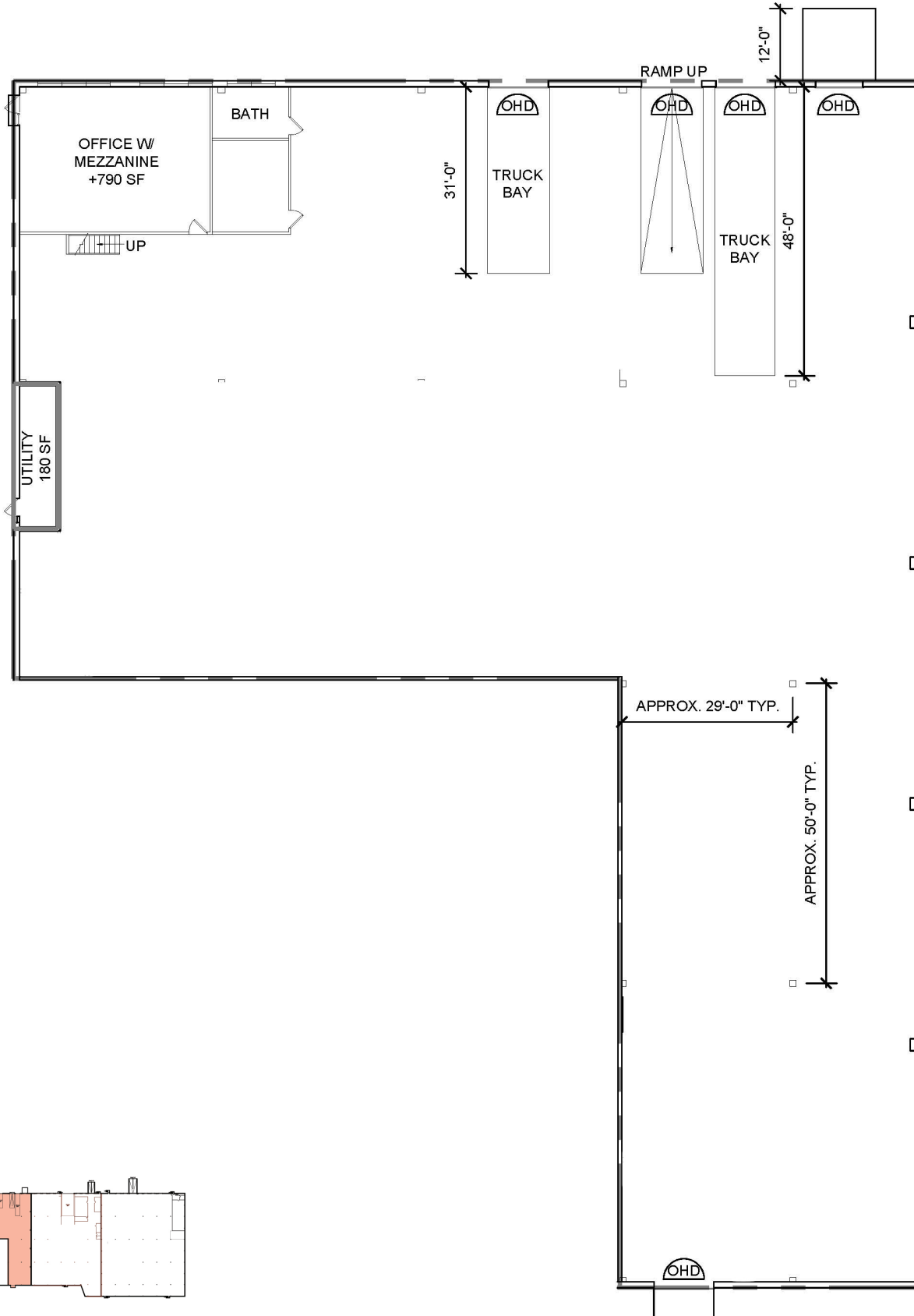
AVAILABLE FOR LEASE

Available Space	20,500 sf Ground
Office Space	1,500 sf On Two Levels
Ceiling Height	18' - 20'
Loading	1 Exterior Docks 2 Interior Docks 1 Drive-in Door
Heat	Gas
Sprinkler	Wet Sprinkler System
Construction	Fireproof
Possession	April 2022
Lease Price	<i>Call or E-mail</i>

PROPERTY WEBSITE
www.MorganParkBK.com

20,500 SF INDUSTRIAL SPACE FOR LEASE

134 Morgan Avenue, East Williamsburg, Brooklyn





20,500 SF INDUSTRIAL SPACE FOR LEASE

134 Morgan Avenue, East Williamsburg, Brooklyn

- 20,500 sf Ground Floor Space
- Off-Street Parking Available
- 1,500 sf Office Space On Two Levels
- 18' to 20' Clear Ceilings
- 1 Exterior Dock & 2 Interior Docks
- 1 Drive-in Door
- Institutionally Owned & Managed

WWW.MORGANPARKBK.COM



Contact Exclusive Agents:

Mathew Diana

718.541.6835 Cell

718-729-7474 x134

MDiana@DYRealty.com

Peter Derbar

718-729-7474 x124

PDerbar@DYRealty.com

